

THEATRE • BRIGHTON • OPEN • AIR •



SUMMER 2018



**Dyke Road
Park**

An aerial photograph of a large, circular, tiered structure, likely a stadium or arena, with a wooden building on the right side. The structure is composed of many concentric, curved rows of light-colored material, possibly wood or concrete, set against a green background. The text "EVERYTHING UNDER THE SUN" is overlaid in large, white, bold, sans-serif capital letters in the center of the image.

EVERYTHING UNDER THE SUN



Patron Simon Evans



Patron Amanda Redman MBE

Welcome to Brighton Open Air Theatre's 2018 Season

Our fourth action packed season in Dyke Road Park runs from Thursday 3rd May to Sunday 30th September. Between those dates we have 70 companies showcasing over 130 performances – our biggest season to date.

Featuring drama, comedy, cabaret, music, dance, family shows and picnics.

Thank you to everyone who has visited **Brighton Open Air Theatre (BOAT)** and reviewed it so warmly; we are thrilled to have been consistently awarded 5 stars on **Trip Advisor** and **Facebook** as well as featuring in **The Guardian**, **Tatler** and **Curtain Call**. For those of you new to BOAT we can't wait to welcome you in. Spending time with friends and family under the open sky is magical; our venue is designed to bring audiences and performers together to make that magic happen.

We are delighted to announce that our new Patron, actress **Amanda Redman MBE**, has joined comedian **Simon Evans** as an ambassador for our work. Amanda says:

"I have followed the story of BOAT from its very beginning and watched it grow into a popular, successful and truly democratic cultural space. I believe that theatre brings us together, and helps us celebrate our stories with the people we love. This is our mission; an open-air theatre for everyone, built in my home city of Brighton, a place that prides itself on diversity and welcomes all. I am proud to be a part of the next journey of the theatre that friendship built."

In this brochure you will find details of all our amazing shows, including the highly anticipated return of **Shakespeare's Globe** giving the audience a choice on-the-day of what play they'd like to see.

Lots of our favourite companies from previous years return with new titles including the family classic **The Adventures of Robin Hood** and **Animal Farm**. There's great live music from **The Who**, **The Doors**, **The Beatles** tributes, and the return of **Richard Durrant**. We have new comedies joining us including **Dad's Army Radio Hour**, family favourites like **The Little Gardener** and David Walliams' **The Midnight Gang**. Brand new to the theatre we welcome The Open Air Cinema showing the classic **The Wizard of Oz** and (only in Brighton) **The Great Houndini**; a special magic show for dogs!

Our charity event this year is a **Punks Picnic**, raising funds for Monday's Child UK.

Keep in touch as we move through the season by signing up to our newsletter on our website and follow us on **Facebook** and **Twitter**, it's where you can find the latest show information.

We look forward to seeing you all this Summer.

The Brighton Open Air Theatre Team.

**PLAN YOUR VISIT
FAQ's on page 32**



SONGS FROM SYRIA

The Saleh Brothers and iyatraQuartet

Boundary-bending iyatraQuartet team up with two of the most outstanding members of the Orchestra of Syrian Musicians. Invited to the UK by Damon Albarn, the Saleh Brothers have since performed at WOMAD, Glastonbury and Cambridge Folk Festival.

A musical journey encompassing traditional songs and brand new musical collaborations.

'Beautiful... full of space and truth' Nigel Kennedy

Thurs 3 May

Doors 6pm | Start 7pm

Full £12 | Conc £10 | Group 10+ £8



MEDEA

Northbrook College

'It is a way to hurt my husband most'

Synthesis, a new and curious company from Northbrook Metropolitan College brings you a contemporary retelling of Euripides' **Medea**. Working with Director Denise Evans, we explore this great story of betrayal, love and terrible murder.

Recommended for 12+ Some Stage Violence.

Book Directly with Northbrook Met www.brightonfringe.org

Fri 4 & Sat 5 May

Doors 6.30pm | Start 7.30pm

Full £8 | Conc £5



FROM ONE HEART TO ANOTHER

The Theatre Shed and Brightonshed

The Theatre Shed and Brightonshed unite at BOAT, exploring end of life and organ donation in a unique and inspiring production. **From One Heart to Another** looks at the adventures a child goes on, and the lessons we remember from our childhood when we're really challenged to question how we see our life.

Recommended for 10+ (Content related to organ donation)

Integrated and signed BSL and Touch Tour Available

Sun 6 May

Doors 1pm | Start 2pm

Full £8 | Conc £5 | Family £22 | Group 10+ £5



THE LIVES THEY LEFT BEHIND

The Miskin Theatre

Racks of suitcases, labelled, and layered in bird droppings. A secret history untouched for many years. The Miskin Theatre Company lifts the lid on the lives of forgotten patients of the Willard Hospital to share the emotional stories and poignant memories from **The Lives They Left Behind**.

Recommended for 12+ Adult Content

Book Directly with The Miskin Theatre www.brightonfringe.org

Wed 9 May

Doors 6.30pm | Start 7.30pm

Full £7.50 | Conc £5



LA BOHÈME

Heritage Opera

Heritage Opera returns with Puccini's best-loved opera, charting the love affair of Rodolfo and Mimi. Living the poor life in Paris is harsh, and they soon find that you need more than passion to survive. Opera doesn't get more romantic than this!

Sung in English, accompanied by piano.

'full of sincerity and atmosphere... a veritable triumph.'
Seen and Heard Int.

Thurs 10 May

Doors 6pm | Start 7pm

Full £22 | Conc £20 | Family £60 | Group 10+ £18



GOING SOUTH

The musical, satirical, singing cabaret act! Brace yourselves for a very special event of musical frivolity, as this fabulous female duo unleash upon you their zany mix of comedy and stunning harmonies, all set to music we know and love. Put simply, a class act, utterly lovable.

Recommended for 16+ Adult Humour

Fri 11 May

Doors 6pm | Start 7pm

Full £10 | Conc £8 | Group 10+ £8



THE DOORS ON FIRE

Setting the night alight this summer, **The Doors On Fire** bring the spirit of the legend alive. Captivating audiences with Morrison's poetic lyrics, tightly interwoven with The Doors' unmistakable virtuosic organ melodies, gritty guitar riffs and hypnotic bass lines.

Let it roll, baby roll!

Sat 12 May

Doors 6pm | Start 7pm

Full £10 | Conc £8 | Group 10+ £7



TOTROCKINBEATS

An amazing three hour, outdoor, family-friendly old school Hip-Hop, Funk and Soul Bloc Party. Featuring top DJs from 1BTN FM, MCs, live graffiti by Dan Lish, B-Boys and Girls, outdoor crafts, kids games, licenced bar and more.

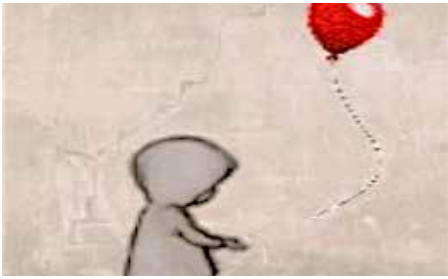
*Book directly with Don't Believe The Hype.
www.brightonfringe.org.*

*All humans over the age of 1 year will require a ticket.
In association with child-friendly Brighton.*

Sun 13 May

Start 2pm

Full £10 | Conc £8



SPURIOUS

Bare-Faced Rep Company

Who are you? And where do you come from? **Spurious**, a new play by a young British playwright Alan Williams, explores these questions through the lens of three generations of Bristolian women. As society's morals evolve each woman no longer needs painful secrets, but does their new-found freedom help or hinder the choices they must still make?

Recommended for 14+ Adult Themes and Strong Language

Wed 16 May

Doors 6.30pm | Start 7.30pm

Full £7 | Conc £5



DAD'S ARMY RADIO HOUR

Seabright Productions

Based on the classic BBC sitcom by Jimmy Perry and David Croft.

Double Fringe First Award winner David Benson (star of **Think No Evil Of Us: My Life with Kenneth Williams**) and Jack Lane (**Wisdom of a Fool**) present a selection of classic radio episodes featuring favourite lines, cherished characters and great feats of vocal impersonation!

'The best-loved of all British comedies' Daily Telegraph

Thurs 17 May

Doors 6.30pm | Start 7.30pm

Full £15 | Conc £12 | Group 10+ £12

GOLDSTREAM – CRITICAL THREAT

Printers Playhouse

It's 2017.
Operation 'Temperer' has put UK troops on UK streets.

With concert attacks and terrorists in white vans targeting civilians, there is a very new frontline.

Members of parliament need results.

This hour-long play explores the military political agenda and its ramifications, in an emotional and tension-packed production.

Recommended for 14+ Adult Themes and Strong Language

Fri 18 May

Doors 6.30pm | Start 7.30pm

Full £10 | Conc £8





THE MIDNIGHT GANG

Heartbreak Productions

Drum roll, please... Heartbreak invites you to join us for the grand opening of The Lord Funt Hospital Playground, a spectacular new play area for the convalescent child.

Tom and his friends will be there too, but you may know them best as **The Midnight Gang**. When everyone else is sweetly sleeping, they gather in the middle of the night in the name of magic, mischief and memory making.

Join the gang on this crucial mission to overcome our greatest fears and uncover the magic ingredient to a fantastic friendship.

Heartbreak promise a daring outdoor adaptation of David Walliams' bestseller. Who knows where the night may lead?

Recommended for 7+

Sat 19 May

Doors 1pm | Start 2pm & Doors 6pm | Start 7pm

Sun 20 May

Doors 1pm | Start 2pm

Full £14 | Conc £10 | Family £42 | Group 10+ £10

THE TEMPEST

The Lord Chamberlain's Men
presented by Brighton Festival

A play of soaring poetry, high comedy and tender love. Shakespeare's late, great gem examines the power of true love, our capacity for vengeance and what it takes to forgive.

Performed by an all-male cast with glorious Elizabethan costumes, music and dance.

*Book directly with Brighton Festival:
www.brightonfestival.org*



Thurs 24 Friday 25 Sat 26 May

Doors 5.45pm Start 6.30pm

Fri 25 Sat 26 May

Doors 12.45pm Start 1.30pm

Full £17.50 | Family £50





PUNKS PICNIC

Brighton Open Air Theatre

The 2018 BOAT Charity Event is going to be a riot!

Join legendary **DJ Gremlin** for a **Punks Picnic** with all money raised going to Mondays Child UK.

Ripping it up in the heart of Dyke Road Park will be local ska punk megastars **The Hotknives**, Brighton's trashiest rockabilly/garage band **The Hillmans**, plus very special guests **The Ramonas**, the UK's all-female tribute to the iconic New York punk rock band Ramones.

So whether you're 6 or 60 let your hair down or spike it up, and mosh, wreck and pogo the afternoon away at this incredible BOAT rockin' special event.

Sun 27 May

Doors 1pm | Start 2pm

Full £10 | Conc £8 | Family £32 | Group 10+ £7.50

THE ADVENTURES OF ROBIN HOOD

JW Productions

Prepare yourself for a thrilling adventure as **Robin Hood** and his merry band whisk you to Sherwood Forest to rise up and fight against the wicked, tax-collecting Sheriff of Nottingham. Directed by James Weisz (**Wind in the Willows & Treasure Island**) this show is a perfect half-term holiday treat for the whole family.

Expect boo-able villains, thigh-slapping songs, high-spirited action and daring escapades!

From the creative team behind **The Amazing Adventures of Pinocchio**, **The Jungle Book** and **Peter Pan**.

'Outstanding, what family theatre should be' Fringe Review

Weds 30 Thurs 31 May, Fri 1 Sat 2 June

Doors 6pm | Start 7pm

Thurs 31 May, Fri 1 Sat 2 Sun 3 June

Doors 1pm | Start 2pm

Full £12 | Conc £10 | Family £40 | Group 10+ £8





THE WINTER'S TALE

The Festival Players

Sparked by an obsessive envy of a perceived relationship between his Queen and his oldest friend; Leontes, King of Sicilia, sets in motion a train of events which affect two kingdoms and two generations. Jealousy and joy, revenge and romance, loss and discovery, remorse and revelry, all climaxing with an amazing revelation.

Tremendous entertainment from one of the UK's premier professional all-male companies.

Wed 6 June

Doors 6.30pm | Start 7.30pm

Full £14 | Conc £12 | Group 10+ £12



BETH

Sealight Theatre (Worthing College)

Beth – The Scottish play... another way!

Imagine a world of female warriors, fighting for status and power, becoming ever more brutal and slowly losing their minds. 10' tall witches, puppetry, fast-paced physical theatre and gender-blind casting combine in this thrilling and unpredictable adaptation of Shakespeare's **Macbeth**.

Book directly with Worthing College

Thurs 7 June

Doors 6pm | Start 7pm

Full £8 | Conc £5



ONCE AND FUTURE: THE GRAIL TALES

Poets Vs MCs

The land is sick. Our stories will serve us. A round table of poets, rappers, storytellers and musicians invoke the search for the grail. Abandofbrothers and RISE, supporting people through difficult times, tell their tales, sing their songs of their journeys through the troubled lands in search of...

May contain strong language

Fri 8 June

Doors 6pm Start 7pm

Full £7 | Conc £5 | Family £20



THE TOTAL WHO SHOW

Johnny Warman's Magic Bus Band

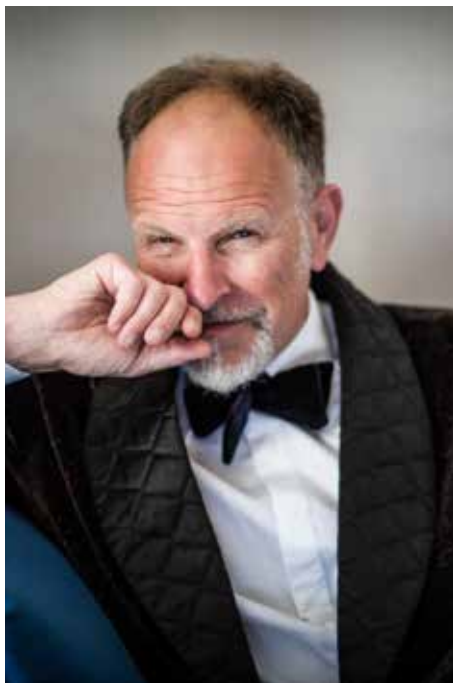
Love The Who? Then get ready for two hours of all the hits including: **Won't Get Fooled Again, My Generation, Pinball Wizard, Amazing Journey, Sparks, Who Are You, Substitute** and more, more, more!

Performed by Johnny Warman's Magic Bus, featuring musicians who have performed with Roger Daltrey, Pete Townsend and John Entwistle from The Who.

Sat 9 June

Doors 6pm | Start 7pm

Full £15 | Conc £12



SIMON EVANS POTTED PREVIEWS

1 & 2

Simon Evans

Building on the success of last year's **Potted Previews**, BOAT Patron and Hove comedy legend* Simon Evans will be joined by two of the UK's hottest stand-up comedy talents, all previewing their 2018 Edinburgh Festival offerings.

Guests and host alike will be trimming the hour-long fat to present just the leanest prime cuts, serving up 40 minutes each of succulent comedy goodness (vegan option available).

See them first before they face the sceptical Scots.

Please check the BOAT website for final line-up.

*Not an actual legend

Recommended for 14+ Adult humour and strong language

Sun 10 & Sun 17 June

Doors 1pm | Start 2pm

Full £10 | Conc £8 | Group 10+ £7

A MIDSUMMER NIGHT'S DREAM

This is My Theatre

'I have had a most rare vision. I have had a dream, past the wit of man to say what dream it was.'

The woods outside Athens are truly bustling on this night!

Runaway lovers, mischievous fairies, their feuding king and queen and the rehearsals of a band of amateur actors make this one of Shakespeare's most loved plays. Join us as we take a journey into this magical world on Midsummer's night.

Wed 13 Thurs 14 Fri 15 Sat 16 June

Doors 6pm | Start 7pm

Sat 16 June

Doors 1pm | Start 2pm

Full £12 | Conc £10 | Family £40 | Group 10+ £10





THE LITTLE GARDENER

How It Ended

An outdoor, interactive adventure for all little gardeners based on the book by Emily Hughes.

Performed inside a greenhouse, containing a real-life garden, How It Ended tell the story of a little gardener and the garden that meant everything to him. He worked hard, very hard, but he was just too little to make a difference (or at least he felt he was). Will you help the little gardener bring his garden to life?

This spellbinding show will melt your heart and get your hands dirty too!

'Kids dig this greenhouse puppet show! It's a gorgeous and cheering sight' The Guardian

Recommended 2+

Mon 18 & Tue 19 June

Doors 10.30am | 1pm | 4pm

Start 11am | 2pm | 5pm

Full £10 | Concession £8 | Family £32 |

Group 10+ £8



THE ADVENTURES OF SHERLOCK HOLMES

Chapterhouse Theatre

Deep in the beautiful Northumbrian countryside a terrifying mystery and a legendary nemesis await the arrival of the world's greatest detective. When the wife of Doctor Watson suddenly disappears, a desperate quest to find her begins. Sherlock Holmes comes face to face with his greatest fear at the hands of his mortal enemy in this stunning new tale of romance and suspense.

Wed 20 June

Doors 6pm | Start 7pm

Full £16 | Conc £10 | Family £46 | Group 10+ £10



STRINGHENCE

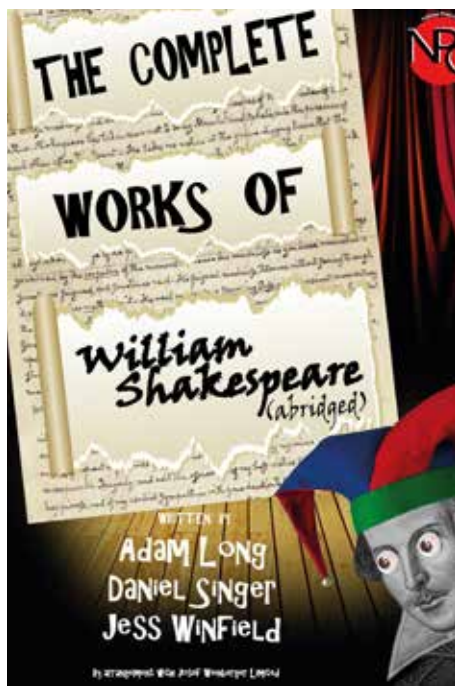
Richard Durrant

Celebrate the Solstice with virtuoso guitarist and composer Richard Durrant, arriving home to Brighton having cycled from The Isle of Orkney to launch his new album **Stringhence**. Richard will be playing music inspired by the British Landscape on his guitar crafted from a 5000 year old English Oak, and his four string Uffington tenor guitar. Expect British Folk, JS Bach, Purcell, and of course plenty of Durrant originals.

Thurs 21 June

Doors 6.30pm | Start 7.30pm

Full £16 | Conc £14 | Family £42



THE COMPLETE WORKS OF WILLIAM SHAKESPEARE (ABRIDGED)

The National Production Company

This critically acclaimed play by Adam Long, Daniel Singer and Jess Winfield is an irreverent, fast-paced romp through the Bard's 37 plays. Join these madcap performers in tights as they weave their way through all of Shakespeare's Comedies, Histories and Tragedies in one wild ride that will leave you breathless and helpless with laughter.

May the Bard be with you!

Recommended for 14+ Adult humour and strong language

Fri 22 & Sat 23 June

Doors 6.30pm | Start 7.30pm

Sat 23 & Sun 24 Jun

Doors 1pm | Start 2pm

Full £15 | Conc £12 | Group 10+ £10

THE COMEDY OF ERRORS

Brighton Shakespeare Company

Shakespeare meets **A Funny Thing Happened On The Way To The Forum**.

Following last summer's rapturously received **A Midsummer Night's Dream**, the Brighton Shakespeare Company return with a madcap and bonkers production of this classic farce.

'Am I in earth, in heaven, or in hell?'

Directed by BSC and Treason Show Artistic Director, Brighton Fringe Award winner Mark Brailsford.

Wed 27 Thurs 28 Fri 29 Sat 30 June

Doors 6pm | Start 7pm

Full £12 | Conc. £10 | Family £35 | Group 10+ £8 each

Sat 30 June & Sun 1 July

Doors 1pm | Start 2pm

Full £15 | Conc £13 | Family £50 | Group 10+ £12





THE RELUCTANT DRAGON

Quantum Theatre

'You've got to fight him sometime or other you know, 'cos he's St George and you're the dragon....'

But this particular dragon is not a bit like the ones in fairy tales – this one writes poetry and doesn't like fighting! Can the boy come up with a clever plan to save his dragon friend and convince the townsfolk to accept him?

Quantum Theatre's enchanting adaptation of Kenneth Grahame's touching, sweet and funny tale of bravery and friendship.

Recommended for 3+

Wed 4 July

Doors 10.30am | Start 11am & Doors 1pm | Start 2pm
Full £10 | Conc £8 | Family £35 | Group 10+ £6



WAITING FOR SHAKESPEARE

Petersfield Shakespeare Festival

Shakespeare's Lost Women and **Shakespeare's Lost Soldier** performed by Harriet Benson. An evening of two plays with unparalleled imaginative range. Directed by Jake Smith (nominated for 'Offies' Best Director). *'Harriet Benson brings all her West End and Shakespearian experience in an all encompassing performance.'* The Petersfield Post

Recommended 12+

Thurs 5 July

Doors 6pm | Start 7pm
Full £14 | Conc £12 | Group 10+ £10



THE MINISTRY OF BISCUITS

The Foundry Group

Stop! Think before you eat that biscuit! Is it in anyway fancy? If so, then you are a criminal! **The Ministry of Biscuits** casts its sinister shadow over the land, until a junior designer creates a biscuit to 'shake confectionary to its foundations. The hit satirical musical, written by Philip Reeve and Brian Mitchell, featuring David Mounfield.

'Absolutely hilarious – satire at its best' Edinburgh Evening News

Fri 6 July

Doors 6pm | Start 7pm
Full £10 | Conc £8 | Family £30 | Group 10+ £7



521 AD / NOTHING

Windmill Young Actors

521 AD: A dynamic ensemble of young actors gather to compete in a storytelling competition putting conflicts aside to win the rights of Kingship. *Recommended 5+*

Nothing: If someone declares that life had no meaning, how do you convince them it does? The stakes are raised dangerously high when classmates persuade their friends that things are worth caring about. *Recommended 12+*

Book directly with Windmill Young Actors

Sat 7 July

521 AD - Doors 1pm | Start 2pm

Nothing - Doors 7pm | Start 8pm



STEPHEN FROST'S IMPRO ALL-STARS

With Simon Evans

Featuring Stephen Frost (**Whose Line is it Anyway**) Andy Smart (**Comedy Store Players**) with Steve Steen and Ruth Bratt (**Showstoppers**). Fresh from a sell-out run in New York. Making people laugh all over the world with their own brand of irreverent improvised comedy. Fast, funny and furious.

'Top notch improvised comic alchemy' The Herald

Recommended for 14+ Adult humour and strong language

Sun 8 July

Doors 1pm | Start 2pm

Full £12 | Conc £10 | Group 10+ £10

MILO'S Cutting Room & Boutique



Independent unisex cutting room and boutique. One-stop destination for all those with an appreciation of style; cuts and colour, luxury products, clothing and accessories. Book at milosonline.co.uk or call 01273 757264





Romeo And Juliet, 2015 © Brighton Festival

THE GLOBE PLAYERS ON TOUR

Shakespeare's Globe

The Merchant of Venice, The Taming of the Shrew & Twelfth Night

How did a company tour in Shakespeare's day? A small group of actors, juggling a variety of roles in three or four plays, would leave London and head off on tour. The choice of play or entertainment was left to the most powerful person of the household.

Following in Shakespeare's tradition, a company of 8 actors will offer a choice of three plays to vote from:

The Merchant of Venice, The Taming of the Shrew and Twelfth Night.

Moments before they are set to begin– and with thrilling unpredictability – the choice will be put back into the hands of the most powerful members of the house: the audience.

'Thy frank election make' (All's Well That Ends Well, Act 2 Scene 3)

Director – Brendan O'Hea

Designer – Andrew D Edwards

Composer – Bill Barclay

Choreographer – Siân Williams

Wed 11 Thurs 12 Fri 13 Sat 14 July

Doors 6pm | Start 7pm

Thurs 12 & Sat 14 July

Doors 1pm | Start 2pm

Full £17.50 | Conc £12.50 | Family £45 | Group 10+ £10



**SHAKESPEARE'S
GLOBE**

MAY

THU 3 SONGS FROM SYRIA *P4* ●

FRI 4 MEDEA *P4* ●

SAT 5 MEDEA *P4* ●

SUN 6 ONE HEART TO ANOTHER *P4* ●

WED 9 LIVES THEY LEFT BEHIND *P4* ●

THU 10 LA BOHÈME *P5* ●

FRI 11 GOING SOUTH *P5* ●

SAT 12 THE DOORS ON FIRE *P5* ●

SUN 13 TOTROCKIN BEATS *P5* ●

WED 16 SPURIOUS *P6* ●

THU 17 DAD'S ARMY *P6* ●

FRI 18 COLDSTREAM *P6* ●

SAT 19 THE MIDNIGHT GANG *P7* ●

SUN 20 THE MIDNIGHT GANG *P7* ●

THU 24 THE TEMPEST *P7* ●

FRI 25 THE TEMPEST *P7* ●

SAT 26 THE TEMPEST *P7* ●

SUN 27 PUNK'S PICNIC *P8* ●

WED 30 ROBIN HOOD *P8* ●

THU 31 ROBIN HOOD *P8* ●

JUNE

FRI 1 ROBIN HOOD *P8* ●

SAT 2 ROBIN HOOD *P8* ●

SUN 3 ROBIN HOOD *P8* ●

WED 6 WINTER'S TALE *P9* ●

THU 7 BETH *P9* ●

FRI 8 ONCE & FUTURE *P9* ●

SAT 9 TOTAL WHO *P9* ●

SUN 10 SIMON EVANS *P10* ●

WED 13 MIDSUMMER NIGHTS DREAM *P10* ●

THU 14 MIDSUMMER NIGHTS DREAM *P10* ●

FRI 15 MIDSUMMER NIGHTS DREAM *P10* ●

SAT 16 MIDSUMMER NIGHTS DREAM *P10* ●

SUN 17 SIMON EVANS *P10* ●

MON 18 LITTLE GARDNER *P11* ●

TUE 19 LITTLE GARDNER *P11* ●

WED 20 SHERLOCK HOLMES *P12* ●

THU 21 STRINGHENCE *P11* ●

FRI 22 COMPLETE WORKS OF WS *P12* ●

SAT 23 COMPLETE WORKS OF WS *P12* ●

SUN 24 COMPLETE WORKS OF WS *P12* ●

WED 27 COMEDY OF ERRORS *P12* ●

THU 28 COMEDY OF ERRORS *P12* ●

FRI 29 COMEDY OF ERRORS *P12* ●

SAT 30 COMEDY OF ERRORS *P12* ●

JULY

SUN 1 COMEDY OF ERRORS *P12* ●

WED 4 RELUCTANT DRAGON *P13* ●

THU 5 WAITING FOR SHAKESPEARE *P13* ●

FRI 6 MINISTRY OF BISCUITS *P13* ●

SAT 7 521AD/ NOTHING *P14* ●

SUN 8 IMPRO ALLSTARS *P14* ●

WED 11 THE GLOBE *P15* ●

THU 12 THE GLOBE *P15* ●

FRI 13 THE GLOBE *P15* ●

SAT 14 THE GLOBE *P15* ●

SUN 15	DECADANCE	P18 ●
WED 18	SENSE & SENSIBILITY	P18 ●
THU 19	SENSE & SENSIBILITY	P18 ●
FRI 20	SENSE & SENSIBILITY	P18 ●
SAT 21	SENSE & SENSIBILITY	P18 ●
SUN 22	HOUNDINI	P19 ●
WED 25	FRANKENSTEIN	P19 ●
THU 26	FRANKENSTEIN	P19 ●
FRI 27	FRANKENSTEIN	P19 ●
SAT 28	FRANKENSTEIN	P19 ●
SUN 29	LOST SEASIDE VARIETY	P20 ●

AUGUST

WED 1	SWALLOWS & AMAZONS	P20 ●
THU 2	SWALLOWS & AMAZONS	P20 ●
FRI 3	SWALLOWS & AMAZONS	P20 ●
SAT 4	SWALLOWS & AMAZONS	P20 ●
SUN 5	SWALLOWS & AMAZONS	P20 ●
WED 8	ANIMAL FARM	P21 ●
THU 9	ANIMAL FARM	P21 ●

FRI 10	ANIMAL FARM	P21 ●
SAT 11	ANIMAL FARM	P21 ●
SUN 12	JAZZ	P21 ●
TUE 14	MEASURE FOR MEASURE	P21 ●
WED 15	BLITHE SPIRIT	P22 ●
THU 16	THE THREE MUSKETEERS	P22 ●
FRI 17	THE THREE MUSKETEERS	P22 ●
SAT 18	LOVE'S LABOUR'S LOST	P23 ●
SUN 19	HENRY V	P23 ●
TUE 21	LITTLE WOMEN	P23 ●
WED 22	TREASURE ISLAND	P23 ●
THU 23	THE TEMPEST	P24 ●
FRI 24	ROMEO & JULIET	P24 ●
SAT 25	CHEESEBOARD PREDICAMENT	P25 ●
SUN 26	CHEESEBOARD PREDICAMENT	P25 ●
MON 27	CHEESEBOARD PREDICAMENT	P25 ●
WED 29	THE CRUCIBLE	P25 ●
THU 30	THE CRUCIBLE	P25 ●
FRI 31	THE CRUCIBLE	P25 ●

SEPTEMBER

SAT 1	THE CRUCIBLE	P25 ●
SUN 2	THE RAILWAY CHILDREN	P26 ●
WED 5	PRINCESS & THE GIANT	P26 ●
FRI 7	TOO MANY COOKS	P26 ●
SAT 8	TOO MANY COOKS	P26 ●
SUN 9	CAVERN TO IMAGINE	P27 ●
WED 12	WOMAN OF NO IMPORTANCE	P27 ●
SAT 15	HANCOCK & CO	P27 ●
SUN 16	THE ALTER EAGLES	P27 ●
WED 19	CRY, BLUEBERRY	P28 ●
THU 20	CRY, BLUEBERRY	P28 ●
FRI 21	AS YOU LIKE IT	P28 ●
SAT 22	FAGIN?	P28 ●
SUN 23	JOAQUIN & GILLIAN	P28 ●
THU 27	SKINNER & T'WITCH	P29 ●
FRI 28	ALGORITHMS IN THE AIR	P29 ●
SAT 29	THE WIZARD OF OZ	P29 ●
SUN 30	BRIGHTON BEACH BOYS	P29 ●



DECADANCE

Seven Dials Collective

The team behind last year's sell out performances **Golden Years** and **Dearly Departed** bring you **Decadance**, celebrating everything 80's! Dust off your neon spandex, shoulder pads and big up your hair. Come and party to your favourite tunes. Expect Soft Cell, The Police, The Cure, The Jam, Billy Joel, Culture Club, Madness, David Bowie, Wham! and many more..

Please email song requests to: brightonbeachboys@mail.com

Sun 15 July

Doors 1pm | Start 2pm

Full £10 | Conc £8 | Family £25

SENSE AND SENSIBILITY

Brighton Little Theatre

The penniless Dashwood girls are forced to leave the comforts of a grand home and relocate to a chilly cottage in Devonshire.

Sensible Elinor pines silently for the quiet and kind-hearted Edward Ferrars.

Impulsive and romantic Marianne loses herself in the idea of a hero on horseback. Margaret just wants to be free to follow her own path...

Jessica Swales' new adaptation of the dearly loved Austen classic brings the challenges and delights of the Dashwoods to life.

Recommended 7+

Wed 18 Thurs 19 Fri 20 Sat 21 July

Doors 6pm | Start 7pm

Sat 21 July

Doors 1pm | Start 2pm

Full £12 | Conc £10 | Family £35 | Group 10+ £9



THE GREAT HOUNDINI

Pet-Fi

The Great Houndini presents: **Tricks and Treats**

Witness the impawssible at Brighton's first ever DOG-FRIENDLY magic show!

Featuring doggy mind-reading, illusions and mind-beagling sleight of hound from some of the UK's top magicians – plus our audience's four-legged friends.

An unfurrgettable afternoon for all the family.

The organisers take no responsibility for any disappearing picnics.

Dogs are welcome; all dogs and humans require a ticket.

Sun 22 July

Doors 1pm | Start 2pm

Full £7.50 | Conc £5 | Dogs £1

FRANKENSTEIN

SISATA

Angel rising...

Slowly, painfully, out of the fusion of rabid light and impenetrable darkness, Angel emerges, alien and alienated. Witness the civilian response to the untamed violence of Angel, the disaffected outlander, whose elemental presence is like a force of nature.

Embracing the themes of the human ideal of perfection, psychosexual identity and the politics of gender and transgenderism, this innovative contemporary reworking of **Frankenstein** is a collaboration between Brighton based SISATA and OFFIE-nominated, BAFTA award-winning playwright, John Foster.

Created in partnership with the Lighthouse, Poole.
Supported by Arts Council England

Recommended 12+ Mild Stage Violence

Weds 25 Thurs 26 Fri 27 Sat 28 July

Doors 6pm | Start 7pm

Sat 28 July

Doors 1pm | Start 2pm

Full £10 | Conc £8 | Group 10+ £8





THE LOST SEASIDE VARIETY SHOW

We Love the Big Blue Shed

Lost at sea and brought to BOAT by the winds of change, Captain Cresswell gathers his shipwrecked crew of international circus and cabaret performers to bring you a glorious seaside special variety show.

From the crew behind **Lost in Transit** (Speigletent) comes an unforgettable show for all ages.

Sun 29 July

Doors 1pm | Start 2pm

Full £12.50 | Conc. £10 | Group 10+ £10 each

SWALLOWS AND AMAZONS

JW Productions

A story set in an idyllic era, a time of endless summer evenings and the beauty of youthful imagination.

Follow Captain Jack and his able crew as they set sail for Wildcat Island on an adventure of a lifetime.

The creative team behind **The Wind in the Willows** bring you a perfect summer show for the whole family, with dastardly pirates, savages and the villainous Captain Flint.

Adapted by Helen Edmundson

Songs by Neil Hannon, The Divine Comedy

'Full of wild adventure' The Guardian

Wed 1 Thurs 2 Fri 3 Sat 5 August

Doors 6pm | Start 7pm

Thurs 2 Fri 3 Sat 4 Sun 4 August

Doors 1pm | Start 2pm

Full £12 | Conc £10 | Family £40 | Group 10+ £8





ANIMAL FARM

Brighton Little Theatre

Manor Farm lies in the heart of the English Countryside. After a boar named Old Major tells the other animals of his vision for a Utopian farm, they revolt against their owner and create a new society in which *'All Animals are Equal'*.

The Pigs are first to take charge, but as each of them vies for power, the society corrupts into a dark and brutal existence, in which *'Some Animals are More Equal than Others'*.

Recommended 7+ Mild Stage Violence

Wed 8 Thurs 9 Fri 10 Sat 11 August

Doors 6pm | Start 7pm

Sat 11 August

Doors 1pm | Start 2pm

Full £12 | Conc £10 | Family £35 | Group 10+ £9



SUNDAY IN THE PARK WITH JAZZ

Charlotte Glasson

Charlotte Glasson curates a celebratory Jazz spectacular featuring the cream of the local scene.

The afternoon kicks off with the **Sussex Jazz Orchestra**, a 20+ piece Big Band led by ace trombonist **Mark Bassey**. Followed by award-winning multi-instrumentalist **Charlotte Glasson's** solo set, climaxing with the exciting and delightful **Paul Richards Trio** exploring unexpected arrangements fusing Latin, Classical, Jazz and Samba.

Sun 12 August

Doors 1pm | Start 2pm

Entrance by Donation at the Gate.



MEASURE FOR MEASURE

Changeling Theatre

'Some Rise By Sin, And Some by Virtue Fall'

Changeling Theatre's production is inspired by the Moulin Rouge with more than a hint of the Burlesque. This bawdy and witty Shakespearean comedy has a storyline full of twists and turns as sin meets virtue and good battles against evil.

Recommended 10+

Tues 14 August

Doors 6pm | Start 7pm

Full £16 | Conc £10 | Family £46 | Group 10+ £10



BLITHE SPIRIT

Changeling Theatre

One of Noel Coward's most enduring comedies; meet celebrated novelist Charles Condomine as he invites eccentric Madame Arcati to hold a séance at his house. Enter the alluring Elvira, Charles' first wife, who delights in taunting her husband and mocking his marriage to new wife Ruth.

'It's discouraging to think how many people are shocked by honesty and how few by deceit.'

Wed 15 August

Doors 6pm | Start 7pm

Full £16 | Conc £10 | Family £46 | Group 10+ £10



THE THREE MUSKETEERS

IK Productions

Following their terrific **Three Men in a Boat** last summer, IKP apply their unique brand to another classic novel.

Expect swashbuckling, sword-fights and subterfuge in this fast and funny adaptation of the French favourite – Alexandre Dumas' **The Three Musketeers**.

Thurs 16 & Fri 17 August

Doors 6pm | Start 7pm

Full £12 | Conc £10 | Family £40 | Group 10+ £10



THE CHIMNEY HOUSE

Pre & post show dining
Local & seasonal produce

Great selection of fine wines and real ales
Perfect place to catch up with friends
Live music every Sunday from 7.30pm
Just 3 mins walk from BOAT

21 Upper Meriton Rd
Just off Exeter St
BN1 5DF

www.thechimneyhousebrighton.co.uk





LOVE'S LABOUR'S LOST

Folksy Theatre

The King of Navarre and his lords have sworn off food, women and sleep for three years. But how will the King and his lords resolve hold up when the Princess of France and her ladies-in-waiting arrive?

This wonderful Shakespeare comedy is filled with Folksy's touch of live music, audience interaction and downright silliness.

Sat 18 August

Doors 6pm | Start 7pm

Full £13.50 | Conc £10 | Family £38 | Group 10+ £9



HENRY V

Young Actors Group

Following their critically acclaimed (4 Stars, The Argus) production of **Richard III**, last summer, YAG return with another romp through Shakespeare's history. Put together in just a week of rehearsals, this hour-long youth production promises silliness, Shakespeare and some sumptuous new writing.

Book Directly with The Young Actors: tickets@theyoungactorsgroup.com

Sun 19 August

Doors 2pm | Start 3pm

Full £5



LITTLE WOMEN

Chapterhouse Theatre

'I want to do something splendid... something heroic or wonderful that won't be forgotten.' Louise May Alcott

2018 marks 100 years since the first women were granted the vote in the UK. In this significant year for gender equality and women's rights, celebrate with Chapterhouse who are putting women centre stage with this exciting new production of Jo, Meg, Amy and Beth's captivating story.

Recommended Age 14+

Tue 21 August

Doors 6pm | Start 7pm

Full £16 | Conc £10 | Family £46 | Group 10+ £10



TREASURE ISLAND

Boxtree Productions

When Jim Hawkins discovers a treasure map it hurtles him across the world to **Treasure Island**. Will Jim find the Treasure? Will he make it back to England? Should Jim trust the mysterious cook, Long John Silver?

With inventive staging, original songs and magical storytelling, enjoy this classic tale of adventure, treasure and of course rum! *Recommended 5+ Mild Stage Peril*

Wed 22nd August

Doors 6pm | Start 7pm

Full £14 | Conc £9 | Family £36



THE TEMPEST

Oddsocks

Shakespeare's tale of illusion and revenge is brought vividly to life in Oddsock's new musical Sci-Fi adaptation.

Experience a **Tempest** that's out of this world from the outrageous company that brought you the 'brilliant and bonkers' **Romeo and Juliet** and 'downright funny' **Macbeth**.

Prepare for launch, get your space suits on and take one small step for man, one giant leap for Shakespeare!

Recommended 7+

Thurs 23 August

Doors 6pm | Start 7pm

Full £15 Conc £13 Family £48 Group 10+ £13

ROMEO AND JULIET

Oddsocks

Oddsocks breathe new life into Shakespeare's **Romeo and Juliet** by giving it a musical Mods and Rockers twist.

Oddsocks return after their phenomenally successful first year that saw the show featured in The Guardian Readers Favourite Theatre of 2017. **Will The Power of Love** bring an end to the families' violent feud?

Best come and see for yourself...

Recommended 7+

Fri 24 August

Doors 6pm | Start 7pm

Full £15 | Conc £13 | Family £48 | Group 10+ £13





THE CHEESEBOARD PREDICAMENT

Halcyon Productions

An absurd black comedy for our times exploring austerity, friendship and what happens when the gin runs dry.

Featuring live music and an exceptional cast; Sally Best, Sian Hutchinson, Jamie Martin and Jonathan Rice.

The Cheeseboard Predicament contains no cheese.

Written by Tom Akehurst

Directed by Nicola Haydn

Original Score by Fiddes Smith

Recommended 12+ Adult themes

Sat 25 August

Doors 6pm | Start 7pm

Sun 26 & Mon 27 August

Doors 1pm | Start 2pm

Full £14 | Conc £10 | Group 10+ £10

THE CRUCIBLE

Identity Theatre Company

Written in the white heat of the McCarthy Communist purges of the 1950's, and based on the real life persecution during the Salem witch trials of the 1600's, **The Crucible**, Arthur Miller's chilling and compelling play is about lust, lies, jealousy and politics. In an era of 'fake news', unfounded accusations, disinformation and media manipulation resonate strongly.

Following in the footsteps of last year's **Blue Remembered Hills**, Identity Theatre promise a physical, site specific re-telling of this powerful tale with beautifully drawn characters displaying the heights of nobility and depths of duplicity.

Recommended 8+ Mild Stage Violence

Wed 29 Thurs 30 Fri 31 August

Sat 1 September

Doors 6pm | Start 7pm

Full £10 | Conc £8 | Group 10+ £8





THE RAILWAY CHILDREN

Heartbreak Productions

Attention passengers! We are sorry to announce that all services out of Gigglesworth Station are delayed!

Gather around Bobbie, Peter and Phyliss on Platform 1, as they pass the time sharing the classic tale of Edith Nesbit's **The Railway Children**.

Recommended Age 14+

Sun 2 September

Doors 1pm | Start 2pm

Full £14 | Conc £10 | Family £42 | Group 10+ £10



THE PRINCESS AND THE GIANT

Folsky Theatre

Princess Sophie is EXHAUSTED! It's all because the grumpy old giant can't sleep – he stomps and stamps and keeps everyone awake ALL night. But Princess Sophie might just have the answer.

Based on the book by Caryl Hart, illustrated by Sarah Warburton and filled with music, puppetry and wonderful characters.

Recommended 2+

Wed 5 September

Doors 10.30am | Start 11am & Doors 1pm | Start 2pm

Full £12 | Conc £8 | Family £35

TOO MANY COOKS

Handmade Theatre

Too Many Cooks is a sizzingly sumptuous show, jam packed with tasty tunes, popping puppets and a lot of silly sausages!

Exploring the boom in food-inspired TV shows, festivals and artisan culture in a fun and interactive way, this promises to be no ordinary theatre show. A culinary delight to get your taste buds going!

Suitable for Children and their families aged 2-100

Recommended 2+

Fri 7 & Sat 8 September

Doors 10.30am | Start 11am & Doors 1pm | Start 2pm

Full £8 | Conc £6 | Family £25 | Group 10+ £6





CAVERN TO IMAGINE

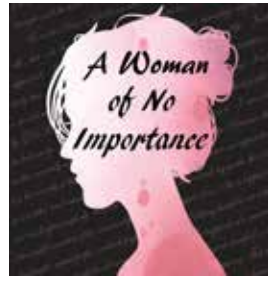
The Vox Beatles

The Vox Beatles are one of the UK's leading Beatles Tribute bands. Playing with passion, enthusiasm and superb musicianship that encapsulates their famous counterparts, they use authentic Vox amplification and guitars to emulate the Beatles sound. Expect a set bursting with early days Cavern Club, Beatlemania, Sgt Pepper / Magical Mystery Tour, The White Album and Rooftop eras.

Sun 9 September

Doors 1pm | Start 2pm

Full £12 | Conc £10 | Family £30 | Group 10+ £10



A WOMAN OF NO IMPORTANCE

Dot Productions

Lady Hunstanton's house party is in full swing when Gerald Arbuthnot is announced as secretary to the witty Lord Illingworth. However, once Gerald's mother makes an appearance, suddenly his future is uncertain...

Comic melodrama and social scandal bubble away in this classic Oscar Wilde satire. Presented in DOT Productions' renowned style, this dramatic comedy is guaranteed to delight.

Wed 12 September

Doors 6pm | Start 7pm

Full £15 | Conc £12 | Group 10+ £12



HANCOCK AND CO.

Hurn Davey Productions

One man, many voices; celebrating over 60 years of **Hancock's Half Hour**. James Hurn performs one lost episode of **Hancock's Half Hour** and two episodes he has written in the style of Ray Galton and Alan Simpson. James voices the entire cast along with iconic 20th Century British favourites; Tony Hancock, Sidney James, Hattie Jacques and Kenneth Williams. *'Utterly masterful and quite superb.'* Jon Culshaw

Sat 15 September

Doors 1pm | Start 2pm

Full £14 | Conc £12 | Group 10+ £12



THE ALTER EAGLES

Swap Hove for LA for the afternoon when **The Alter Eagles** return with their authentic, two hour tribute to one of the finest classic rock bands of all times.

Enjoy all your Eagles favourites; **Hotel California, Take it Easy, Desperado, New Kid in Town, One of these Nights** and **Take it to the Limit**, with soaring harmonies and duelling lead guitars.

Sun 16 September

Doors 1pm | Start 2pm

Full £10 | Conc £8 | Family £20



CRY, BLUEBERRY

Richard Canal

1932: The Great Depression.

A vaudevillian clown wrestles with sex addiction and a haunted past. A poetic, magical-realist solo play about honesty, courage, hope and redemption.

Praised with four stars as 'a brutally honest and sincere confession, and a profound and memorable performance.'

Recommended 14+ Strong Language and Adult Themes

Wed 19 & Thurs 20 September

Doors 6pm | Start 7pm

Full £10 | Conc £8



AS YOU LIKE IT

The Pantaloons

'All the world's a stage, and all the men and women merely players'

Welcome to the Forest of Arden, a world of clowns, lovers, runaways and rebels. The critically acclaimed Pantaloons present their innovative and hilarious open-air version of Shakespeare's timeless comedy, with foot-stomping live music and their own inimitable brand of buffoonery.

Fri 21 September

Doors 6pm | Start 7pm

Full £13.50 | Conc £10 | Family £37 | Group 10+ £10



FAGIN?

Kick in the Head

Who was **Fagin**?

Was he based on a real-life character?

Join **Fagin** on his final night in prison before being hanged. As madness envelops him he is visited by some old acquaintances. Think you know **Fagin**? Think again.

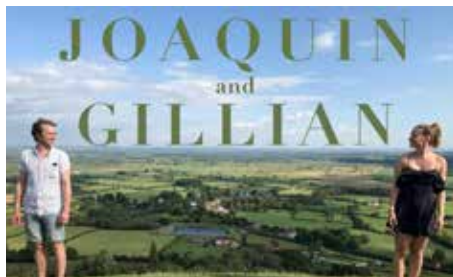
Written by acclaimed director and playwright Simon Downing. (**Old Herbaceous** and **My Dog's Got No Nose**)

Recommended Age 14 + Adult Themes

Sat 22 September

Doors 6pm | Start 7pm

Full £14 | Conc £12



JOAQUIN & GILLIAN

Strike Drum Productions

Andrew Armfield & Fiona McGarvey improvise folk songs and tales of old, right in front of your folk-loving eyes.

Watch in disbelief and delight as they create catchy tunes on the spot based on your suggestions.

'The best musical improv hour you've never heard of... absolutely you must go' A Pint and a Play

Sun 23 September

Doors 1pm | Start 2pm

Full £10 | Conc £8 | Group 10+ £8



SKINNER AND T'WITCH

Skinner & T'Witch are a Leeds based duo performing brilliant, highly original folk, infused with flamenco and theatre style songs featuring driving rhythms, intense harmonies and inspiring lyrics.

'Excellent original songs and great voices' BBC Radio Kent

Thurs 27 September

Doors 6pm | Start 7pm

Full £10 | Conc. £8



ALGORITHMS IN THE AIR

Mathematical Promotions

Mathematical Promotions launch their popular rock night **Algorithms** from Brighton's dark basement venues into the great outdoors.

Five extremely talented local bands play live into the night accompanied by a stunning digital visual display.

Please check Facebook event for line up announcements.

Fri 28 September

Doors 4.30pm | Start 5pm

Full £10 | Conc £8 | Group 10+ £7



THE WIZARD OF OZ

The Open Air Cinema

The Open Air Cinema meets Brighton's Open Air Theatre somewhere over the rainbow for one night only!

We invite you to dress up and sing-a-long to this classic joy of a film. Follow the yellow-brick road for best costume prizes, and a free serving of popcorn for all.

Book directly with The Open Air Cinema: www.theopenaircinema.com

Sat 29 September

Doors 5pm | Start 7pm

Full £10 | On the Door £15



BRIGHTON BEACH BOYS END OF SUMMER PARTY

Returning to BOAT for the fourth year running, bringing us the sunshine sounds of California. This annual season topping show features the hits of The Beach Boys from **Surfin' Safari** to **God Only Knows**; this is a show packed with **Good Vibrations**.

Come and celebrate the last days of summer with this fantastic family-friendly musical party.

'Amazing tribute' The Guardian

Sun 30 September

Doors 1pm | Start 2pm

Full £10 | Conc £8 | Family £25

THE BOAT STORY

BOAT is the vision of Brighton playwright, showman and construction manager, Adrian Bunting, who died from pancreatic cancer in May 2013, aged 47. In his final days Adrian threw his efforts into realising a long held ambition; the creation of a permanent open-air theatre for the city he loved. BOAT was launched by Adrian's Mother, Isobelle Bunting, on the 9th May 2015, almost two years to the day after Adrian passed away.

Now in it's fourth year and a well-established part of Brighton and Hove's cultural landscape, we are looking forward to our biggest season ever. BOAT is a registered charity. We rely on ticket sales, private donations, and sponsorship.



Adrian Bunting 1966-2013

THANK YOU TO OUR SPONSORS

PLATINUM SPONSOR



Cardens Accountants are proud to be the Platinum sponsor of BOAT
cardensaccountants.com

SILVER SPONSORS BRONZE SPONSORS



DB Sussex Investments Ltd



FOR KEEPING ADRIAN'S LEGACY ALIVE

BOAT WOULD ALSO LIKE TO THANK

Adrian's Family, James Payne, Claire Rafferty, Miller Bourne Architects, Jeremy Diater Chalk Architects, Brighton and Hove City Council and the Parks Team especially Steve and Jo the Dyke Road Park gardeners. Friends of Dyke Road Park, Beverley Grover, David Flack, The Chimney House, Vahid at The Dyke Road Café, Windlesham School, Bell Containers, Peter Stapley and The Crescent Pub Quizzers. Most importantly, our amazing team of volunteers and the performers and audiences who have brought our theatre to life.

All donations are gratefully received.

BOAT is run by volunteers, from trustees to stewards - if you are interested in being part of the crew, or would like information about sponsorship in any shape or form please drop us a line hello@brighttonopenairtheatre.co.uk

"Life is all about having dreams and following them" **Adrian Bunting**

PLAN YOUR VISIT

TICKETS and BOOKING

ONLINE: www.brightonopenairtheatre.co.uk

PHONE: 0333 666 3366

(handling charge + booking fee applies)

IN PERSON: If a show is not sold out tickets are available at the gate from the time of doors open. Please note we can only take cash. Nearest cash point is at Tesco Metro.

GROUPS: To discuss specific requirements please email hello@brightonopenairtheatre.co.uk

CONCESSIONS:

- Over 60s
- Under 16s
- Unemployed
- Students with an NUS card
- People with a disability

FIND US

Dyke Road Park, Dyke Road, Brighton, BN3 6EH
500m walk from Seven Dials roundabout, opposite the Booth Museum.

BY BUS: The 27 and 77 buses.

BY BIKE: Cycle rack available inside the venue.

PARKING: Pay parking bays are on Dyke Road.



ACCESS INFORMATION:

BOAT is a relaxed venue, awarded the Bronze Access Award from Attitude is Everything. For full access information please see brightonopenairtheatre.co.uk. To discuss your specific access needs please email hello@brightonopenairtheatre.co.uk

WHAT HAPPENS IF IT RAINS?

The shows are designed to go on whatever the weather. Please come prepared for the British Summer; suncream and wellies!

If the weather is too dangerous a decision may be taken to cancel, please check Facebook for the latest information.

In the event of a cancellation tickets will be refunded through TicketSource.

FOOD and DRINK

PICNICS: You are welcome to bring a picnic, a bottle, blanket, cushion and whatever you like. Please take your rubbish home with you. If you must leave it behind make a donation to help with the cost of our recycling.

BAR: There is an excellent and affordable bar.

OTHER: Hot and cold food is also available at the Dyke Road Park Café, The Captains Table fish and chip shop and at The Chimney House pub in Exeter Street.

Any unanswered questions check the **YOUR VISIT** section on brightonopenairtheatre.co.uk or email hello@brightonopenairtheatre.co.uk

The BOAT Team

Patrons: Amanda Redman MBE and Simon Evans
Trustees: Dominic Boon, Sue Bradley, Donna Close, Graeme Hawkins, Steve North, Tom O'Connell, Steve Turner, Jane Waller and Lisa Wolfe

Manager: Anne-Marie Williams
Duty Managers: Tanya Macleod, Amanda Ogilvie, Kate Packham, Adam Self and Genny Turay.
2018 Brochure design: Rebecca Pitt
Publicity: Hannah Armstrong
Marketing Intern: Charlotte Bendy

Terms and Conditions

For full terms and conditions please see brightonopenairtheatre.co.uk

BOAT is a registered charity in England and Wales (no. 1156051)

Every day is an open day



Come and see us

**Windlesham School & Nursery
is proud to be sponsoring BOAT, our neighbours
on Dyke Road, for their 2018 season.**



**Windlesham School
& Nursery**

To book a tour of the school in action,
led by our pupils, contact our Admissions
Secretary at:

Windlesham School and Nursery
199 Dyke Road, Brighton, BN1 5AA

Telephone 01273 553645
info@windlesham.school.co.uk